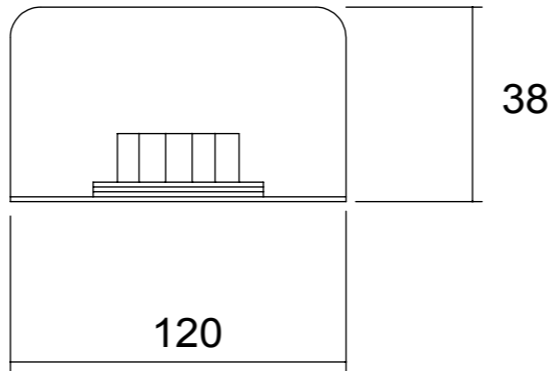
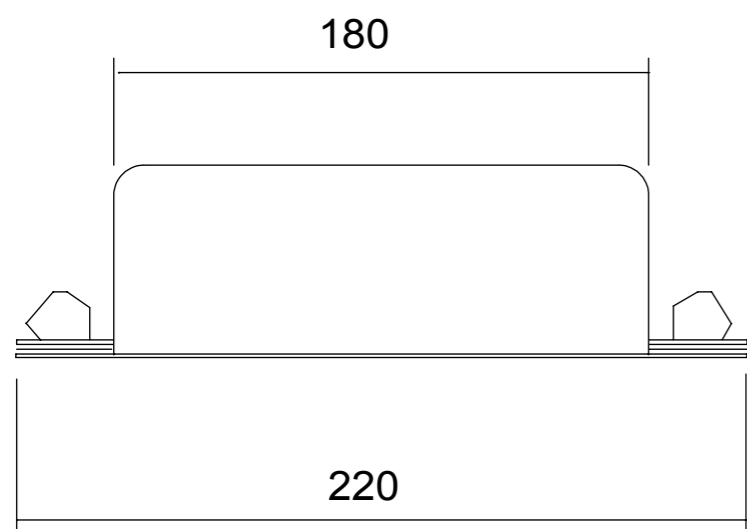


**RoHS**  
2002/95/EC  
✓  
**Compliant**

**SPECIFICATION**

RATED VOLTAGE	480V
CURRENT	8A @ 40°C
FREQUENCY	50 / 60 Hz
TEMPERATURE RANGE	-25 TO 85 °C
LEAKAGE CURRENT	6.6mA AT 250V 50Hz
TEST VOLTAGE	2kV DC



**MINIMUM INSERTION LOSS**

Frequency Hz	30k	100k	150k	300k	10M
Common Mode dB	8	50	64	>75	>75
Differential dB		17	32	>42	>42